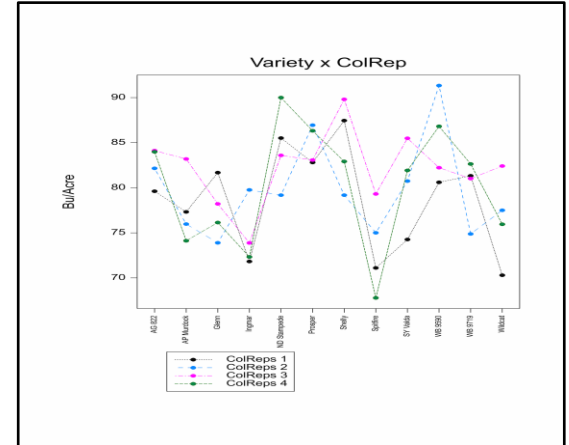
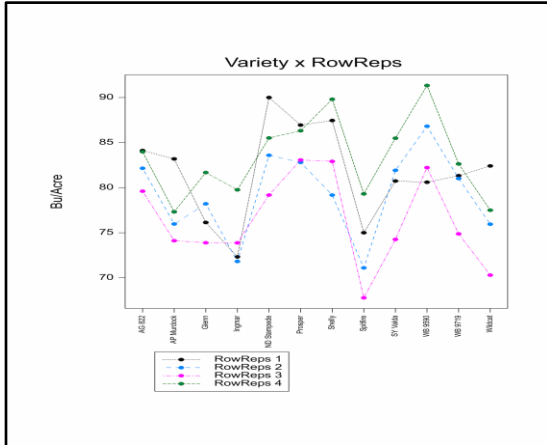


# 2024 Wheat Variety Yield Trial

## Velva, North Dakota



Doubly resolvable row-column design 12 treatments in 4 x 12 grid

37	38	39	40	41	42	43	44	45	46	47	48
9	8	10	7	12	6	11	2	1	5	4	3
25	26	27	28	29	30	31	32	33	34	35	36
7	6	4	8	1	2	10	5	3	11	9	12
13	14	15	16	17	18	19	20	21	22	23	24
12	11	2	10	3	5	4	9	6	1	8	7
1	2	3	4	5	6	7	8	9	10	11	12
5	3	1	11	9	4	12	8	7	10	6	2

### Analysis of variance

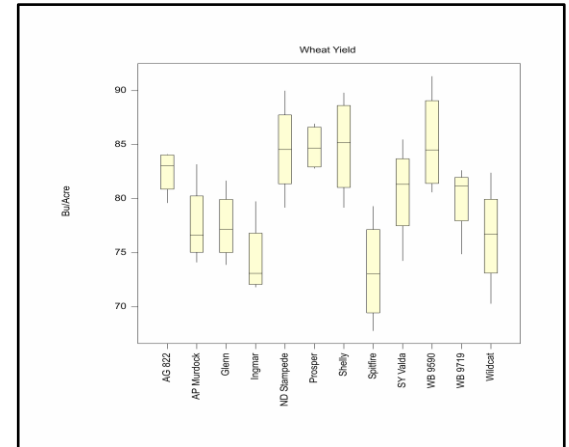
Variate: Bu\_Acre

Source of variation	d.f.	s.s.	m.s.	v.r.	F pr.
RowReps stratum	3	338.766	112.922	19.19	
ColReps stratum	3	79.523	26.508	4.51	
RowReps.ColReps.*Units* stratum					
Treatments	11	801.751	72.886	12.39	<.001
Residual	30	176.521	5.884		
Total	47	1396.561			

### Stratum standard errors and coefficients of variation

Variate: Bu\_Acre

Stratum	d.f.	s.e.	cv%
RowReps	3	3.068	3.8
ColReps	3	1.486	1.9
RowReps.ColReps.*Units*	30	2.426	3.0



# Wheat Varieties

Variety	Company	Bu/Acre
WE 9590	WestBred	85.3
Shelly	University of Minnesota	84.9
Prosper	North Dakota State University	84.8
ND Stampede	North Dakota State University	84.6
Ag 822	Allegiant Seed	82.5
SY Valda	AgriPro	80.6
WB 9719	WestBred	80.0
AP Murdock	AgriPro	77.7
Glenn	North Dakota State University	77.5
TCG-Wildcat	TCG	76.5
SY Ingmar	AgriPro	74.5
TCG-Spitfire	TCG	73.3
LSD (P=0.05)		3.5
CV (%)		3.0
p-value		0.001
Mean		80.2

Variety	% Protein
SY Ingmar	14.7
Glenn	14.6
AP Murdock	14.2
TCG-Wildcat	14.2
WE 9590	14.1
ND Stampede	14.0
Ag 822	13.8
TCG-Spitfire	13.8
SY Valda	13.6
WB 9719	13.5
Prosper	12.9
Shelly	12.9
LSD (P=0.05)	0.48
CV (%)	2.4
p-value	0.001
Mean	13.8

Planted May 12

Harvested August 9

Doubly resolvable row-column design